



RAWIVAL

RAW TO THE CORE

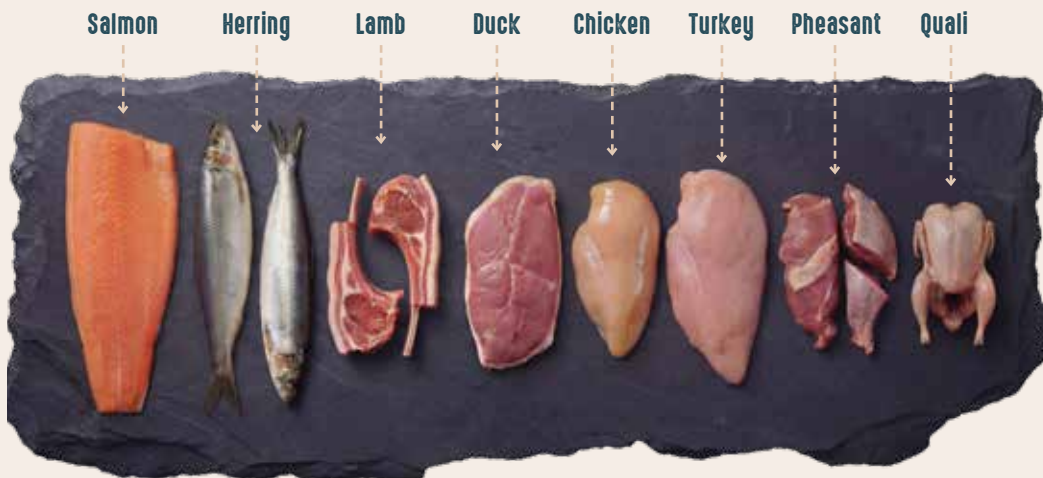
PRODUCT BOOK

RAWIVAL is an ultra-premium complete pet food with a high percentage of raw meat. The rawness and freshness of the ingredients are the main characteristics of all the recipes of this line.

RAWIVAL is rooted in the philosophy that nature knows best. Our recipes reflect the ancestral diet of dogs and cats – rich in raw animal proteins and free from unnecessary fillers.

Premium Raw Proteins

We carefully select boneless raw ingredients such as chicken, turkey, duck, pheasant, quail, lamb and freshly frozen salmon or herring – ensuring high bioavailability of nutrients in every bite.



Dual-Flavour Delight

Each RAWIVAL recipe features a tempting combination of two premium raw protein sources to deliver a variety of tastes and amino acids, keeping pets excited at mealtime and supporting overall health.

Clean, Natural Ingredients

No artificial preservatives, colors, or fillers – just whole, raw ingredients that are minimally processed to maintain their full nutritional value.

Optimal Health & Vitality

Our recipes with raw ingredients are packed with essential nutrients, promoting better digestion, shinier coats, healthier skin, lean muscle mass and overall vitality.

Crafted for Palatability

We don't just nourish – we delight. Each recipe is designed to entice even the pickiest eaters with rich aroma, natural texture and bold taste.



WITH SALMON OIL
Natural source of essential
omega-3 fatty acids.

Superfoods in RAWIVAL Recipes

Our use of superfoods is grounded in the belief that pets thrive when their food not only fuels them, but supports their long-term wellness from the inside out.

Natural Remedies, Not Synthetic Supplements

We harness the medicinal and nutritional properties of real, recognizable superfoods – never relying on lab-made compounds.



Targeted Benefits with Purpose

Every superfood we use has a clear function - from anti-inflammatory effects (turmeric, cherry), to gut support (aloe vera, asparagus), to immunity and skin health (marigold, rosemary).

Synergy of Whole Foods

Superfoods deliver their best results when combined in synergy with raw high-quality protein sources.

Transitioning to Rawival

Rawival is a powerful, meat-rich nutrition made with a high content of raw meat ingredients before processing, combined with naturally high levels of protein and fat. Such a rich formula deserves a careful introduction, so we recommend transitioning gradually to give your pet time to adapt and enjoy every benefit comfortably.

Day 1–2: 75% old food / 25% Rawival
Day 3–4: 50% old food / 50% Rawival
Day 5–6: 25% old food / 75% Rawival
Day 7+: 100% Rawival



Keep Mealtime Exciting

Once on Rawival, you can rotate within the Rawival range of recipes and flavours, giving your dog or cat a broad variety of proteins and tastes in every bowl.

ADULT FORMULAS		Complete food for	
		toy & small breed	medium & large breed
GIFTS OF FIELDS & BRANCHES	Lamb with Quail	●	●
NORTH SEA`S FINEST	Salmon & Herring	●	●
WILD GIFTS WITH WINGS	Duck with Pheasant	●	●
FINEST WITH WINGS	Chicken & Turkey	●	●

PUPPY FORMULAS		Complete food for		
		toy & small breed	medium & large breed	gestating or breastfeeding bitches
GIFTS OF FIELDS & BRANCHES	Lamb with Quail	●	●	●
NORTH SEA`S FINEST	Salmon & Herring	●	●	●

Canine Formulas

At Kraftia, we believe in a balanced, species - informed approach to canine nutrition. That's why our RAWIVAL LINE honors dogs' evolutionary needs through a thoughtful combination of raw animal ingredients and time-tested grains.

Raw Protein, Ancient Wisdom

RAWIVAL combines the nutritional power of premium raw, boneless animal ingredients with a curated blend of ancestral grains - delivering a balanced, holistic diet rooted in tradition and nature.

Nutrient-Rich Ancestral Grains

Ingredients like spelt, brown rice, barley, oats and millet provide natural fiber, slow-releasing carbohydrates and essential minerals, fueling active dogs with sustained energy and digestive health.

Raw Animal Proteins First

Dogs thrive on animal proteins. Our recipes are anchored in raw boneless cuts such as chicken, duck, turkey and lamb - highly digestible and packed with amino acids to support lean muscle and vitality.

Wholesome, Balanced Nutrition

The best of both worlds: high-quality raw proteins complemented by heritage grains for a diet that supports modern dogs while honoring their ancestral roots.

Free from Artificial Additives

No artificial preservatives, flavors or unnecessary fillers. Just clean, functional nutrition from raw and whole-food sources.

Gentle on Digestion, Rich in Benefits

Our blend of ancient grains is carefully chosen for their digestibility and nutritional value, helping support a healthy gut, stable energy and reduced risk of food sensitivities.

Complete & Satisfying Meals

Each recipe provides nutritional profile balanced in proteins, fats and smart carbohydrates - keeping your dog full, active and thriving.



1ST
Ingredient
RAW LAMB

Raw Animal Ingredients Ratio:



77%
Lamb

+



23%
Quail

75%

MADE WITH 75% QUALITY ANIMAL INGREDIENTS

25%

COMPLEMENTED WITH 25% VEGETABLES & BOTANICALS

0%

ARTIFICIAL PRESERVATIVES, FLAVOURS OR COLOURS

Features



STRONG MUSCLES



HEALTHY JOINTS



HEALTHY SKIN AND A SHINY COAT



HEALTHY DIGESTION



HIGH ENERGY LEVELS

ADULT DOG
toy & small breed

Premium grass-fed lamb and quail proteins support lean muscle and daily vitality. Prebiotics and fibres encourage gentle digestion, while glucosamine and chondroitin maintain joint flexibility. Omega fatty acids and antioxidants contribute to a healthy, glossy coat and reinforce natural immunity.

Composition

Raw deboned lamb (27%), raw deboned quail (8%), dehydrated lamb protein (8%), chicken fat, dehydrated quail protein (6%), dehydrated chicken protein, hydrolyzed fish proteins (cod, haddock), fish oil (from salmon), spelt, brown rice, barley, oats, millet, hydrolyzed poultry proteins (chicken, turkey), digest-chicken giblets (liver, heart, kidney), dried whole eggs, linseed, dried beet pulp, alfalfa meal, pea fibre, chicory inulin (0.4%), yeast extract (source of manno-oligo-saccharides) (0.3%), fructo-oligosaccharides (0.3%), Ascophyllum Nodosum, calcium carbonate, monocalcium phosphate, potassium chloride, sodium chloride, dried brewer's yeast, glucosamine, chondroitin sulphate, dried asparagus, dried blueberry, dried cranberry, dried cherry, dried rosemary, dried turmeric, dried marigold, psyllium husks and seeds, Yucca Schidigera.

Analytical constituents

Crude protein	33%	Omega-6 fatty acids	2.9%
Crude fat	19%	Omega-3 fatty acids	0.90%
Crude fibre	1.95%	DHA	0.55%
Crude ash	7.9%	EPA	0.25%
Calcium	1.3%	Glucosamine	1300 mg/kg
Phosphorus	1%	Chondroitin sulphate	1000 mg/kg

Available in size: 0.75 kg, 2.5 kg, 7.5 kg.




Gifts of fields & branches

Lamb with Quail



1ST
Ingredient
RAW LAMB

Raw Animal Ingredients Ratio:

 **77%** Lamb +  **23%** Quail

75%

MADE WITH 75% QUALITY ANIMAL INGREDIENTS

25%

COMPLEMENTED WITH 25% VEGETABLES & BOTANICALS

0%

ARTIFICIAL PRESERVATIVES, FLAVOURS OR COLOURS

Features



STRONG MUSCLES



HEALTHY JOINTS



HEALTHY SKIN AND A SHINY COAT



HEALTHY DIGESTION



HIGH ENERGY LEVELS

ADULT DOG
medium & large breed

Grass-fed lamb and quail deliver high-quality protein to maintain muscle strength. Functional fibres support digestion, while glucosamine and chondroitin protect joint mobility. Antioxidants and omega fatty acids preserve coat health and overall wellbeing.

Composition

Raw deboned lamb (27%), raw deboned quail (8%), dehydrated lamb protein (8%), chicken fat, dehydrated quail protein (6%), dehydrated chicken protein, hydrolyzed fish proteins (cod, haddock), fish oil (from salmon), spelt, brown rice, barley, oats, millet, hydrolyzed poultry proteins (chicken, turkey), digest-chicken giblets (liver, heart, kidney), dried whole eggs, linseed, dried beet pulp, alfalfa meal, pea fibre, chicory inulin (0.4%), yeast extract (source of manno-oligo-saccharides) (0.3%), fructo-oligosaccharides (0.3%), Ascophyllum Nodosum, calcium carbonate, monocalcium phosphate, potassium chloride, sodium chloride, dried brewer's yeast, glucosamine, chondroitin sulphate, dried asparagus, dried blueberry, dried cranberry, dried cherry, aloe vera, dried rosemary, dried turmeric, dried marigold, psyllium husks and seeds, Yucca Schidigera.

Analytical constituents

Crude protein	32.2%	Omega-6 fatty acids	3%
Crude fat	18.6%	Omega-3 fatty acids	0.90%
Crude fibre	1.95%	DHA	0.55%
Crude ash	7.7%	EPA	0.25%
Calcium	1.3%	Glucosamine	1300 mg/kg
Phosphorus	1%	Chondroitin sulphate	1000 mg/kg

Available in size: 0.75 kg, 2.5 kg, 10 kg.



North sea`s finest

Salmon & Herring



1ST
Ingredient
RAW SALMON

Raw Animal Ingredients Ratio:



58%
Salmon

+



42%
Herring

75%

MADE WITH 75% QUALITY
ANIMAL INGREDIENTS

25%

COMPLEMENTED WITH 25%
VEGETABLES & BOTANICALS

0%

ARTIFICIAL PRESERVATIVES,
FLAVOURS OR COLOURS

Features



STRONG MUSCLES



HEALTHY JOINTS



HEALTHY SKIN
AND A SHINY COAT



HEALTHY DIGESTION



HIGH
ENERGY LEVELS

ADULT DOG
toy & small breed

Rich salmon and herring proteins support energy and muscle tone. Prebiotics and fibres encourage digestive balance, while antioxidants maintain immune function. Omega-3 fatty acids support a shiny coat and cardiovascular support.

Composition

Salmon (15%), dehydrated herring protein (15%), dehydrated salmon protein (13%), herring (11%), fish oil (from salmon), hydrolyzed fish proteins (cod, haddock), linseed, spelt, brown rice, barley, oats, millet, dried beet pulp, alfalfa meal, pea fibre, chicory inulin (0.4%), yeast extract (source of manno-oligo-saccharides) (0.3%), fructo-oligosaccharides (0.3%), Ascophyllum Nodosum, calcium carbonate, monocalcium phosphate, potassium chloride, sodium chloride, dried brewer's yeast, glucosamine, chondroitin sulphate, dried apple, dried asparagus, dried blueberry, dried cranberry, dried cherry, dried rosemary, dried turmeric, dried marigold, psyllium husks and seeds, Yucca Schidigera.

Analytical constituents

Crude protein	33%	Omega-6 fatty acids	2.5%
Crude fat	19%	Omega-3 fatty acids	1.3%
Crude fibre	1.95%	DHA	0.80%
Crude ash	7.9%	EPA	0.40%
Calcium	1.3%	Glucosamine	1300 mg/kg
Phosphorus	1%	Chondroitin sulphate	1000 mg/kg

Available in size: 0.75 kg, 2,5 kg, 7.5 kg.



North sea`s finest

Salmon & Herring



1ST
Ingredient
RAW SALMON

Raw Animal Ingredients Ratio:



58%
Salmon

+



42%
Herring

75%

MADE WITH 75% QUALITY
ANIMAL INGREDIENTS

25%

COMPLEMENTED WITH 25%
VEGETABLES & BOTANICALS

0%

ARTIFICIAL PRESERVATIVES,
FLAVOURS OR COLOURS

Features



STRONG MUSCLES



HEALTHY JOINTS



HEALTHY SKIN
AND A SHINY COAT



HEALTHY DIGESTION



HIGH
ENERGY LEVELS

ADULT DOG
medium & large breed

Salmon and herring proteins sustain muscle strength and endurance. Fibres support digestive efficiency, while glucosamine and chondroitin maintain joint function. EPA and DHA enhance coat, brain, heart and immune health.

Composition

Salmon (15%), dehydrated herring protein (15%), dehydrated salmon protein (13%), herring (11%), fish oil (from salmon), hydrolyzed fish proteins (cod, haddock), linseed, spelt, brown rice, barley, oats, millet, dried beet pulp, alfalfa meal, pea fibre, chicory inulin (0.4%), yeast extract (source of manno-oligo-saccharides) (0.3%), fructo-oligosaccharides (0.3%), Ascophyllum Nodosum, calcium carbonate, monocalcium phosphate, potassium chloride, sodium chloride, dried brewer's yeast, glucosamine, chondroitin sulphate, dried apple, dried asparagus, dried blueberry, dried cranberry, dried cherry, aloe vera, dried rosemary, dried turmeric, dried marigold, psyllium husks and seeds, Yucca Schidigera.

Analytical constituents

Crude protein	32.2%	Omega-6 fatty acids	2.4%
Crude fat	18.6%	Omega-3 fatty acids	1.3%
Crude fibre	1.95%	DHA	0.75%
Crude ash	7.9%	EPA	0.35%
Calcium	1.3%	Glucosamine	1300 mg/kg
Phosphorus	1%	Chondroitin sulphate	1000 mg/kg

Available in size: 0.75 kg, 2,5 kg, 10 kg.



Wild gifts with wings

Duck with Pheasant



1ST
Ingredient
RAW DUCK

Raw Animal Ingredients Ratio:



73%
Duck



27%
Pheasant

75%

MADE WITH 75% QUALITY ANIMAL INGREDIENTS

25%

COMPLEMENTED WITH 25% VEGETABLES & BOTANICALS

0%

ARTIFICIAL PRESERVATIVES, FLAVOURS OR COLOURS

Features



STRONG MUSCLES



HEALTHY JOINTS



HEALTHY SKIN AND A SHINY COAT



HEALTHY DIGESTION



HIGH ENERGY LEVELS

ADULT DOG
toy & small breed

Duck and pheasant proteins maintain lean muscle and vitality. Prebiotics and fibres support digestive wellbeing, while brown seaweed promotes oral hygiene. Omega fatty acids and antioxidants contribute to coat health and immune support.

Composition

Raw deboned duck (19%), dehydrated duck protein (19%), dehydrated pheasant protein (7%), raw deboned pheasant (7%), chicken fat, hydrolyzed poultry proteins (chicken, turkey), hydrolyzed fish proteins (cod, haddock), fish oil (from salmon), dried whole eggs, spelt, brown rice, barley, oats, millet, digest-chicken giblets (liver, heart, kidney), linseed, dried beet pulp, alfalfa meal, pea fibre, chicory inulin (0.4%), yeast extract (source of manno-oligosaccharides) (0.3%), fructo-oligosaccharides (0.3%), Ascophyllum Nodosum, calcium carbonate, monocalcium phosphate, potassium chloride, sodium chloride, dried brewer's yeast, glucosamine, chondroitin sulphate, dried artichoke, dried cherry, dried blueberry, dried cranberry, dried rosemary, dried turmeric, dried marigold, psyllium husks and seeds, Yucca Schidigera.

Analytical constituents

Crude protein	33%	Omega-6 fatty acids	3.4%
Crude fat	19%	Omega-3 fatty acids	0.90%
Crude fibre	1.95%	DHA	0.55%
Crude ash	7.9%	EPA	0.25%
Calcium	1.2%	Glucosamine	1300 mg/kg
Phosphorus	0.90%	Chondroitin sulphate	1000 mg/kg

Available in size: 0.75 kg, 2,5 kg, 7.5 kg.



Wild gifts with wings

Duck with Pheasant



1ST
Ingredient
RAW DUCK

Raw Animal Ingredients Ratio:



73%
Duck



27%
Pheasant

75%

MADE WITH 75% QUALITY
ANIMAL INGREDIENTS

25%

COMPLEMENTED WITH 25%
VEGETABLES & BOTANICALS

0%

ARTIFICIAL PRESERVATIVES,
FLAVOURS OR COLOURS

Features



STRONG MUSCLES



HEALTHY JOINTS



HEALTHY SKIN
AND A SHINY COAT



HEALTHY DIGESTION



HIGH
ENERGY LEVELS

ADULT DOG
medium & large breed

Raw duck and pheasant sustain muscle strength and activity. Glucosamine and chondroitin maintain joint mobility, while fibres support digestive balance. Antioxidants and omega fatty acids enhance skin, coat and overall health.

Composition

Raw deboned duck (19%), dehydrated duck protein (8%), dehydrated pheasant protein (8%), raw deboned pheasant (7%), chicken fat, hydrolyzed poultry proteins (chicken, turkey), hydrolyzed fish proteins (cod, haddock), fish oil (from salmon), dried whole eggs, spelt, brown rice, barley, oats, millet, digest-chicken giblets (liver, heart, kidney), linseed, dried beet pulp, alfalfa meal, pea fibre, chicory inulin (0.4%), yeast extract (source of manno-oligosaccharides) (0.3%), fructo-oligosaccharides (0.3%), Ascophyllum Nodosum, calcium carbonate, monocalcium phosphate, potassium chloride, sodium chloride, dried brewer's yeast, glucosamine, chondroitin sulphate, dried artichoke, dried cherry, dried blueberry, dried cranberry, aloe vera, dried rosemary, dried turmeric, dried marigold, psyllium husks and seeds, Yucca Schidigera.

Analytical constituents

Crude protein	32.2%	Omega-6 fatty acids	3.4%
Crude fat	18.6%	Omega-3 fatty acids	0.90%
Crude fibre	1.95%	DHA	0.55%
Crude ash	7.9%	EPA	0.30%
Calcium	1.3%	Glucosamine	1300 mg/kg
Phosphorus	1%	Chondroitin sulphate	1000 mg/kg

Available in size: 0.75 kg, 2,5 kg, 10 kg.



Finest with wings

Chicken & Turkey



1ST
Ingredient
RAW CHICKEN

Raw Animal Ingredients Ratio:



56%
Chicken

+



44%
Turkey

75%

MADE WITH 75% QUALITY
ANIMAL INGREDIENTS

25%

COMPLEMENTED WITH 25%
VEGETABLES & BOTANICALS

0%

ARTIFICIAL PRESERVATIVES,
FLAVOURS OR COLOURS

Features



STRONG MUSCLES



HEALTHY JOINTS



HEALTHY SKIN
AND A SHINY COAT



HEALTHY DIGESTION



HIGH
ENERGY LEVELS

ADULT DOG
toy & small breed

Gentle chicken and turkey proteins support lean muscle and daily wellbeing. Brown seaweed contributes to oral hygiene, while prebiotics and fibres promote digestive comfort. Omega fatty acids and antioxidants maintain a healthy coat and immune system.

Composition

Raw deboned chicken (20%), raw deboned turkey (16%), dehydrated chicken protein (12%), dehydrated turkey protein (11%), chicken fat, hydrolyzed poultry proteins (chicken, turkey), hydrolyzed fish proteins (cod, haddock), fish oil (from salmon), spelt, brown rice, barley, oats, millet, digest-chicken giblets (liver, heart, kidney), dried whole eggs, linseed, dried beet pulp, alfalfa meal, pea fibre, chicory inulin (0.4%), yeast extract (source of manno-oligosaccharides) (0.3%), fructo-oligosaccharides (0.3%), Ascophyllum Nodosum, calcium carbonate, monocalcium phosphate, potassium chloride, sodium chloride, dried brewer's yeast, glucosamine, chondroitin sulphate, dried cranberry, dried cherry, dried blueberry, dried asparagus, dried rosemary, dried turmeric, dried marigold, psyllium husks and seeds, Yucca Schidigera.

Analytical constituents

Crude protein	33%	Omega-6 fatty acids	3.1%
Crude fat	19%	Omega-3 fatty acids	0.90%
Crude fibre	1.95%	DHA	0.55%
Crude ash	7.8%	EPA	0.25%
Calcium	1.2%	Glucosamine	1300 mg/kg
Phosphorus	0.90%	Chondroitin sulphate	1000 mg/kg

Available in size: 0.75 kg, 2,5 kg, 7.5 kg.



Finest with wings

Chicken & Turkey



1ST
Ingredient
RAW CHICKEN

Raw Animal Ingredients Ratio:

 **56%** Chicken +  **44%** Turkey

75%
MADE WITH 75% QUALITY
ANIMAL INGREDIENTS

25%
COMPLEMENTED WITH 25%
VEGETABLES & BOTANICALS

0%
ARTIFICIAL PRESERVATIVES,
FLAVOURS OR COLOURS

ADULT DOG
medium & large breed

Features



Raw chicken and turkey maintain lean muscle and vitality. Glucosamine and chondroitin preserve joint mobility, while fibres support digestive efficiency. Antioxidants and omega fatty acids enhance coat health, skin condition and overall wellbeing.

Composition

Raw deboned chicken (20%), raw deboned turkey (16%), dehydrated chicken protein (11%), dehydrated turkey protein (11%), chicken fat, hydrolyzed poultry proteins (chicken, turkey), hydrolyzed fish proteins (cod, haddock), fish oil (from salmon), spelt, brown rice, barley, oats, millet, digest-chicken giblets (liver, heart, kidney), dried whole eggs, linseed, dried beet pulp, alfalfa meal, pea fibre, chicory inulin (0.4%), yeast extract (source of manno-oligo-saccharides) (0.3%), fructo-oligosaccharides (0.3%), Ascophyllum Nodosum, calcium carbonate, monocalcium phosphate, potassium chloride, sodium chloride, dried brewer's yeast, glucosamine, chondroitin sulphate, dried cranberry, dried cherry, dried blueberry, dried asparagus, aloe vera, dried rosemary, dried turmeric, dried marigold, psyllium husks and seeds, Yucca Schidigera.

Analytical constituents

Crude protein	32.4%	Omega-6 fatty acids	3%
Crude fat	18.6%	Omega-3 fatty acids	0.90%
Crude fibre	1.95%	DHA	0.55%
Crude ash	7.7%	EPA	0.25%
Calcium	1.2%	Glucosamine	1300 mg/kg
Phosphorus	0.90%	Chondroitin sulphate	1000 mg/kg

Available in size: 0.75 kg, 2,5 kg, 10 kg.



Gifts of fields & branches

Lamb with Quail



1ST
Ingredient
RAW LAMB



71%
Lamb

+



29%
Quail

Raw Animal Ingredients Ratio:

75%

MADE WITH 75% QUALITY
ANIMAL INGREDIENTS

25%

COMPLEMENTED WITH 25%
VEGETABLES & BOTANICALS

0%

ARTIFICIAL PRESERVATIVES,
FLAVOURS OR COLOURS

Features



STRONG MUSCLES



HEALTHY JOINTS



HEALTHY SKIN
AND A SHINY COAT



HEALTHY DIGESTION



COGNITIVE & VISUAL
DEVELOPMENT

PUPPY
toy & small breed

Balanced lamb and quail proteins support strong growth. DHA from salmon oil enhances cognitive and visual development, while gentle fibres promote digestive comfort. Glucosamine, antioxidants, and brown seaweed protect joints, oral health and immunity.

Composition

Raw deboned lamb (25%), raw deboned quail (10%), chicken fat, dehydrated lamb protein (8%), dehydrated quail protein (6%), dehydrated chicken protein, hydrolyzed fish proteins (cod, haddock), fish oil (from salmon), spelt, brown rice, barley, oats, millet, hydrolyzed poultry proteins (chicken, turkey), digests-chicken giblets (liver, heart, kidney), dried eggs, linseed, dried beet pulp, alfalfa meal, pea fibre, glucosamine, chondroitin sulfate, chicory inulin (0.4%), yeast extract (source of manno-oligo-saccharides) (0.3%), fructo-oligosaccharides (0.3%), Ascophyllum Nodosum, calcium carbonate, monocalcium phosphate, potassium chloride, sodium chloride, dried brewer's yeast, dried asparagus, dried blueberry, dried cranberry, dried cherry, aloe vera, dried rosemary, dried turmeric, dried marigold, psyllium husks and seeds, Yucca Schidigera.

Analytical constituents

Crude protein	34.2%	Omega-6 fatty acids	3.7%
Crude fat	21%	Omega-3 fatty acids	1.1%
Crude fibre	1.8%	DHA	0.70%
Crude ash	7.7%	EPA	0.30%
Calcium	1.3%	Glucosamine	1400 mg/kg
Phosphorus	1%	Chondroitin sulphate	1100 mg/kg

Available in size: 0.75 kg, 2.5 kg, 7.5 kg.

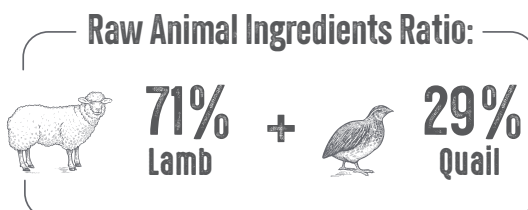


Gifts of fields & branches

Lamb with Quail



1ST
Ingredient
RAW LAMB



75%
MADE WITH 75% QUALITY
ANIMAL INGREDIENTS

25%
COMPLEMENTED WITH 25%
VEGETABLES & BOTANICALS

0%
ARTIFICIAL PRESERVATIVES,
FLAVOURS OR COLOURS

Features

PUPPY
medium & large breed



Specially prepared to support controlled growth with lamb and quail proteins. DHA and EPA support brain, vision and skeletal development, while glucosamine maintain healthy joints. Fibres, antioxidants and brown seaweed optimize digestion, immune function and oral care.

Composition

Raw deboned lamb (25%), raw deboned quail (10%), chicken fat, dehydrated lamb protein (10%), dehydrated quail protein (7%), dehydrated chicken protein, hydrolyzed fish proteins (cod, haddock), fish oil (from salmon), spelt, brown rice, barley, oats, millet, hydrolyzed poultry proteins (chicken, turkey), digest-chicken giblets (liver, heart, kidney), dried whole eggs, linseed, dried beet pulp, alfalfa meal, pea fibre, glucosamine, chondroitin sulphate, chicory inulin (0.4%), yeast extract (source of manno-oligo-saccharides) (0.3%), fructo-oligosaccharides (0.3%), Ascophyllum Nodosum, calcium carbonate, monocalcium phosphate, potassium chloride, sodium chloride, dried brewer's yeast, dried asparagus, dried blueberry, dried cranberry, dried cherry, dried rosemary, dried turmeric, dried marigold, psyllium husks and seeds, Yucca Schidigera.

Analytical constituents

Crude protein	33.3%	Omega-6 fatty acids	3.7%
Crude fat	20.4%	Omega-3 fatty acids	1.1%
Crude fibre	1.8%	DHA	0.70%
Crude ash	7.7%	EPA	0.30%
Calcium	1.3%	Glucosamine	1400 mg/kg
Phosphorus	1%	Chondroitin sulphate	1100 mg/kg

Available in size: 0.75 kg, 2.5 kg, 7.5 kg.



North sea`s finest

Salmon & Herring



1ST
Ingredient
RAW SALMON

Raw Animal Ingredients Ratio:

 **58%**
Salmon +  **42%**
Herring

75%

MADE WITH 75% QUALITY
ANIMAL INGREDIENTS

25%

COMPLEMENTED WITH 25%
VEGETABLES & BOTANICALS

0%

ARTIFICIAL PRESERVATIVES,
FLAVOURS OR COLOURS

Features

PUPPY
toy & small breed



STRONG MUSCLES



HEALTHY JOINTS



HEALTHY SKIN
AND A SHINY COAT



HEALTHY DIGESTION



COGNITIVE & VISUAL
DEVELOPMENT

Carefully balanced salmon and herring proteins encourage steady growth. DHA supports cognitive and visual development and gentle fibres contribute digestive comfort. Brown seaweed and antioxidants strengthen oral health and natural defenses.

Composition

Salmon (15%), dehydrated herring protein (15%), dehydrated salmon protein (13%), herring (11%), hydrolyzed fish proteins (cod, haddock), fish oil (from salmon), linseed, spelt, brown rice, barley, oats, millet, dried shrimps (source of glucosamine and chondroitin sulphate), dried beet pulp, alfalfa meal, pea fibre, chicory inulin (0.4%), yeast extract (source of manno-oligo-saccharides) (0.3%), fructo-oligosaccharides (0.3%), Ascophyllum Nodosum, calcium carbonate, monocalcium phosphate, potassium chloride, sodium chloride, dried brewer's yeast, dried apple, dried asparagus, dried blueberry, dried cranberry, dried cherry, dried rosemary, dried turmeric, dried marigold, psyllium husks and seeds, Yucca Schidigera.

Analytical constituents

Crude protein	34%	Omega-6 fatty acids	2.4%
Crude fat	20.8%	Omega-3 fatty acids	1.4%
Crude fibre	1.8%	DHA	0.80%
Crude ash	7.9%	EPA	0.40%
Calcium	1.3%	Glucosamine	1400 mg/kg
Phosphorus	1%	Chondroitin sulphate	1100 mg/kg

Available in size: 0.75 kg, 2,5 kg, 7.5 kg.



North sea`s finest

Salmon & Herring



1ST
Ingredient
RAW SALMON

Raw Animal Ingredients Ratio:



58%
Salmon

+



42%
Herring

75%

MADE WITH 75% QUALITY
ANIMAL INGREDIENTS

25%

COMPLEMENTED WITH 25%
VEGETABLES & BOTANICALS

0%

ARTIFICIAL PRESERVATIVES,
FLAVOURS OR COLOURS

Features

PUPPY
medium & large breed



STRONG MUSCLES



HEALTHY JOINTS



HEALTHY SKIN
AND A SHINY COAT



HEALTHY DIGESTION



COGNITIVE & VISUAL
DEVELOPMENT

Crafted to provide protein for steady muscle development. DHA and EPA promote brain and vision growth, while glucosamine supports joint formation. Fibres, brown seaweed and antioxidants nurture digestion, immunity and oral health.

Composition

Salmon (15%), dehydrated herring protein (15%), dehydrated salmon protein (13%), herring (11%), hydrolyzed fish proteins (cod, haddock), fish oil (from salmon), linseed, spelt, brown rice, barley, oats, millet, dried shrimps (source of glucosamine and chondroitin sulphate), dried beet pulp, alfalfa meal, pea fibre, chicory inulin (0.4%), yeast extract (source of manno-oligo-saccharides) (0.3%), fructo-oligosaccharides (0.3%), Ascophyllum Nodosum, calcium carbonate, monocalcium phosphate, potassium chloride, sodium chloride, dried brewer's yeast, dried apple, dried asparagus, dried blueberry, dried cranberry, dried cherry, aloe vera, dried rosemary, dried turmeric, dried marigold, psyllium husks and seeds, Yucca Schidigera.

Analytical constituents

Crude protein	33.3%	Omega-6 fatty acids	2.6%
Crude fat	20.1%	Omega-3 fatty acids	1.4%
Crude fibre	1.8%	DHA	0.85%
Crude ash	7.8%	EPA	0.45%
Calcium	1.3%	Glucosamine	1400 mg/kg
Phosphorus	1%	Chondroitin sulphate	1100 mg/kg

Available in size: 0.75 kg, 2,5 kg, 7,5 kg.



10.0 kg



RAWIVAL

Gifts of fields & branches

Lamb with Quail



100% RAW

77% MEAT 23% BONE

complete food for **ADULT DOG** (medium & large breeds)



scan for more info



kraftiapet.com